

Rio Bosque Wetlands Park:

Just Add Water



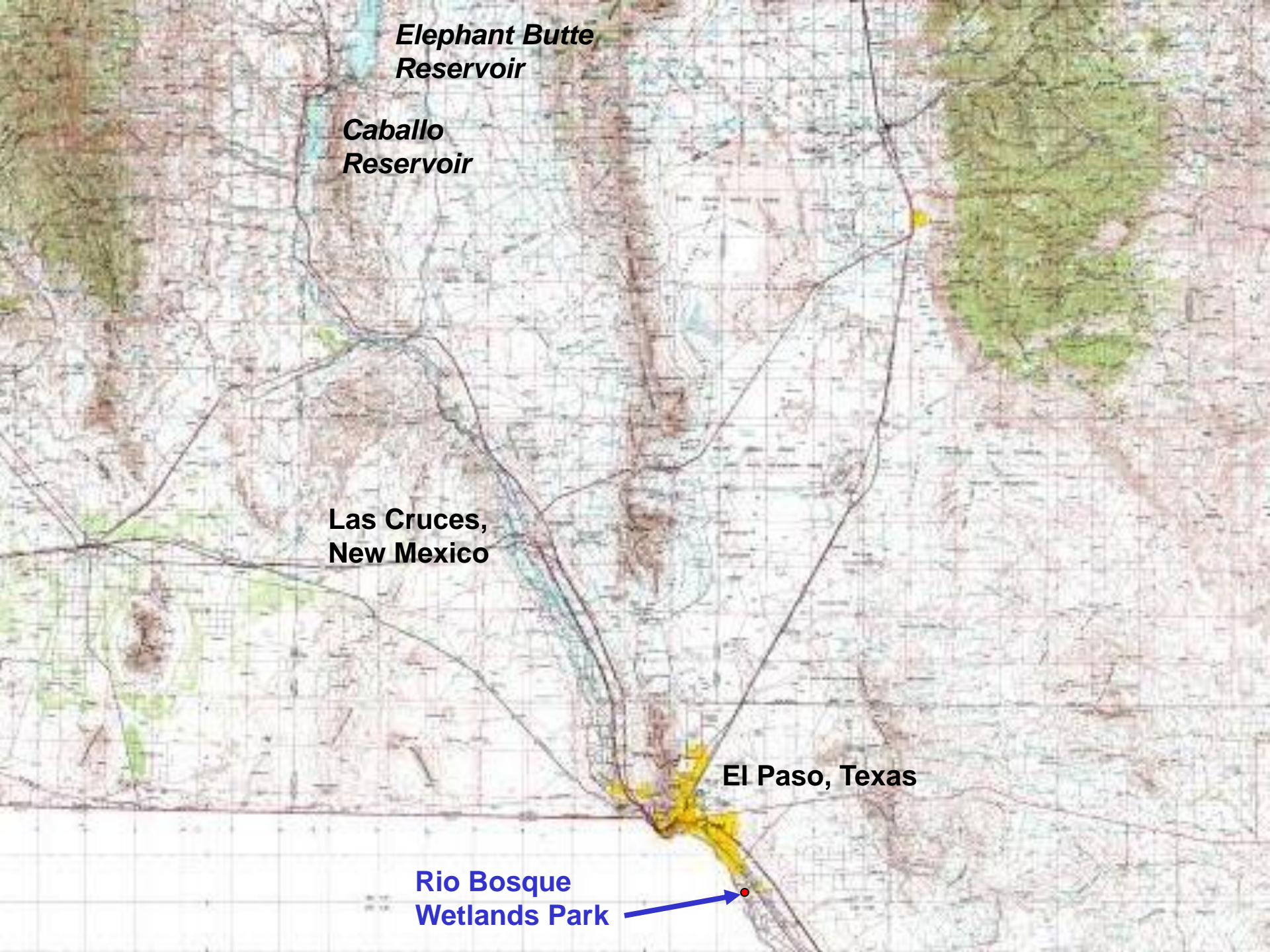
***Elephant Butte
Reservoir***

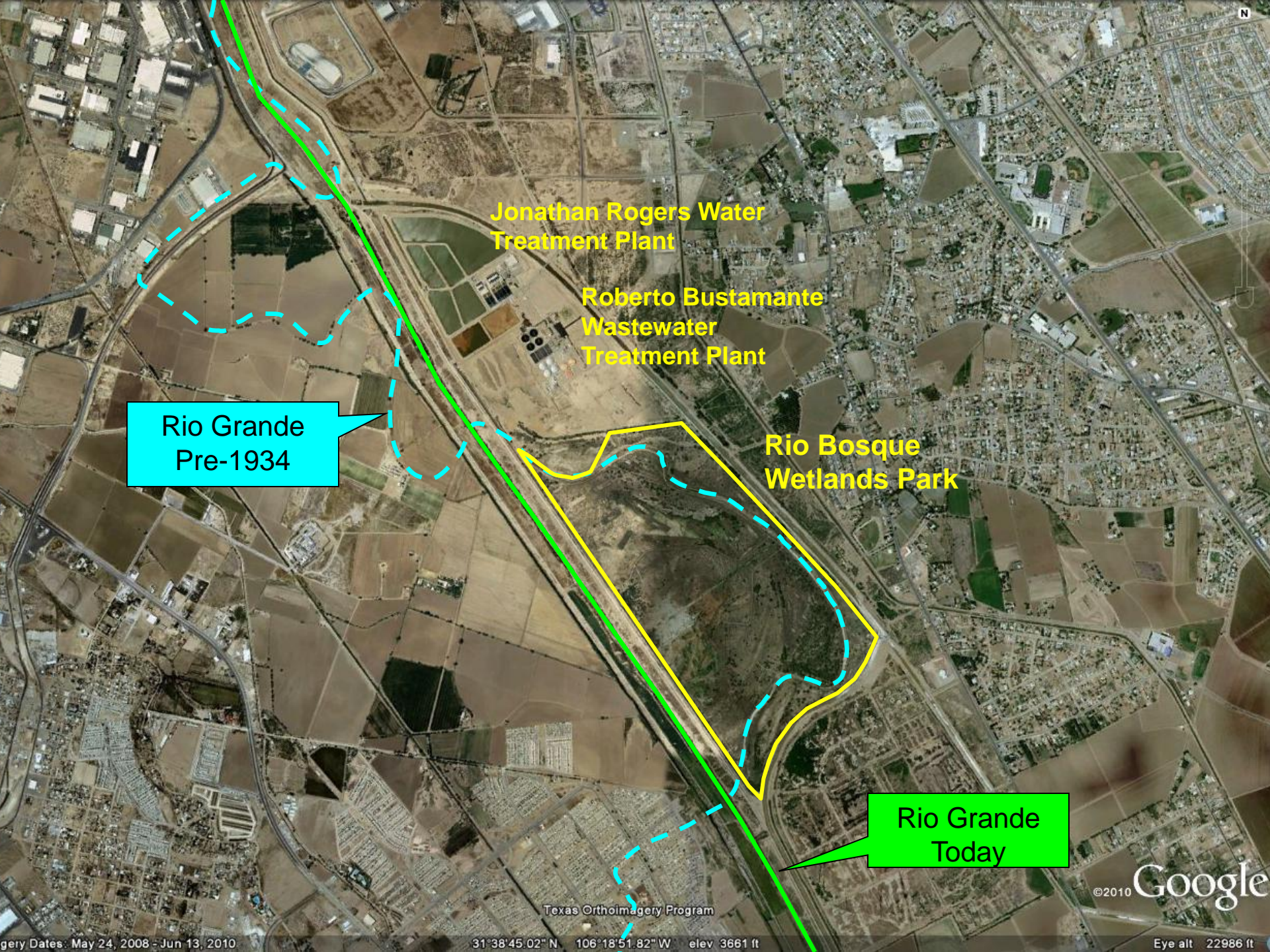
***Caballo
Reservoir***

**Las Cruces,
New Mexico**

El Paso, Texas

**Rio Bosque
Wetlands Park**





Jonathan Rogers Water Treatment Plant

Roberto Bustamante Wastewater Treatment Plant

Rio Grande Pre-1934

Rio Bosque Wetlands Park

Rio Grande Today

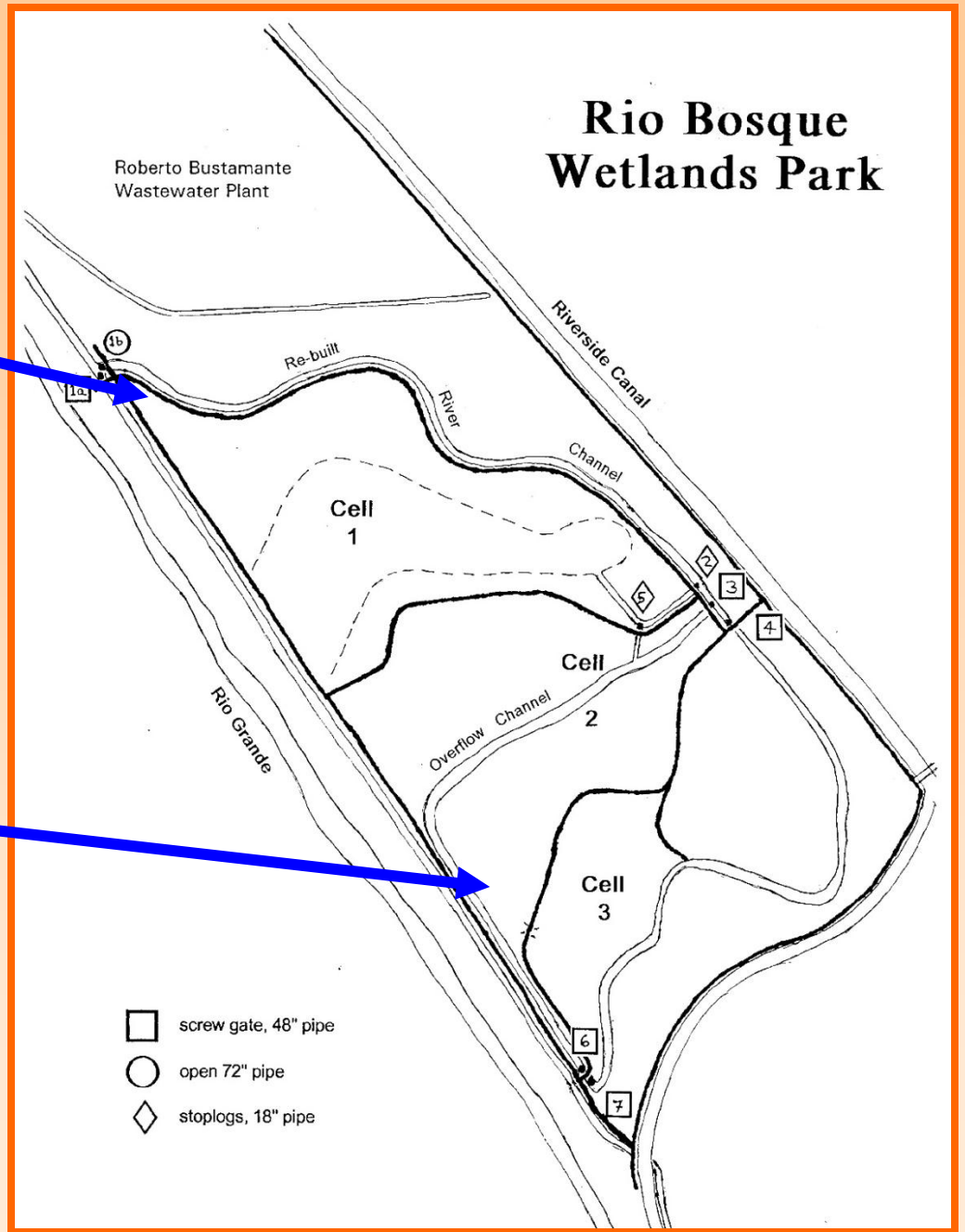
©2010 Google

Texas Orthoimagery Program



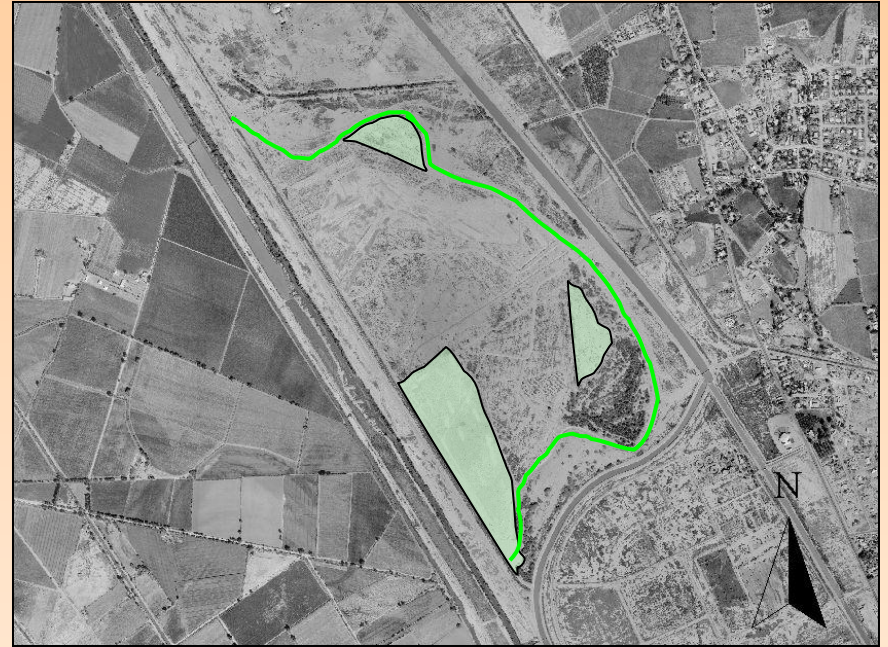


23 June 1981





March 1991



1997



March 1991



1997



Early 1998



6 May 2014















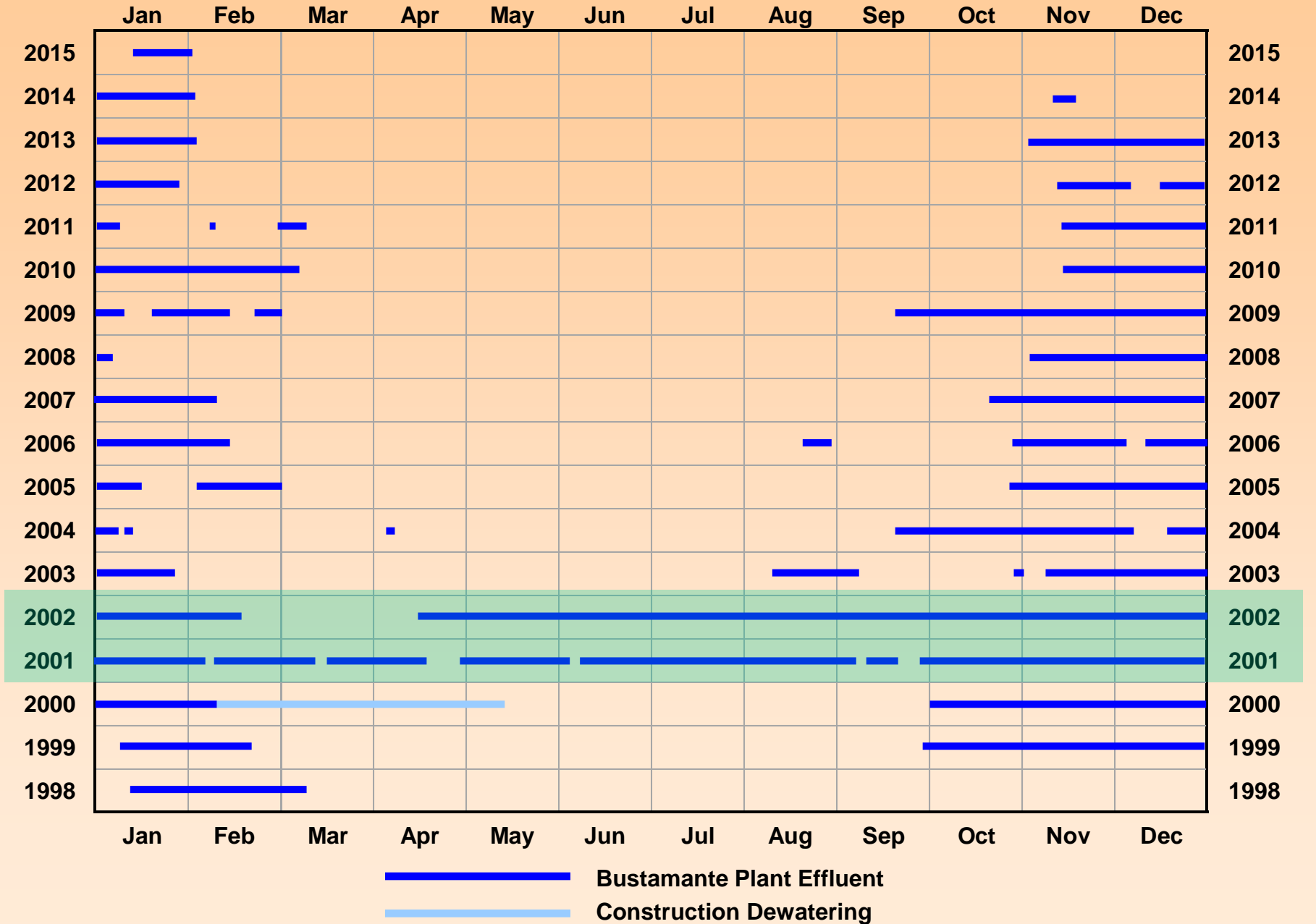




25 Jan 2013



Water Deliveries to Rio Bosque Wetlands Park













30 June 2002

14 June 2003





30 June 2002

30 March 2004



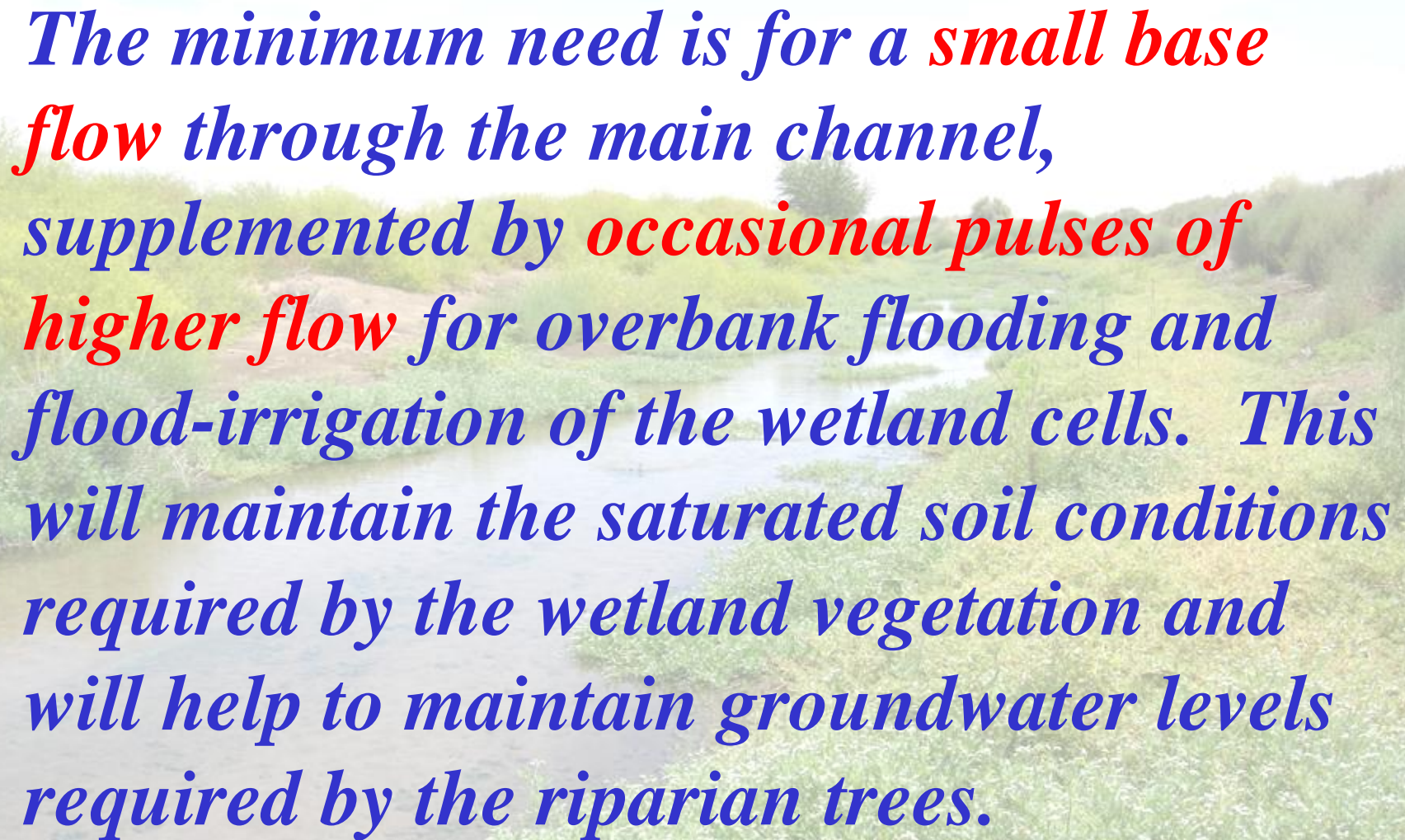


30 June 2002

3 June 2013

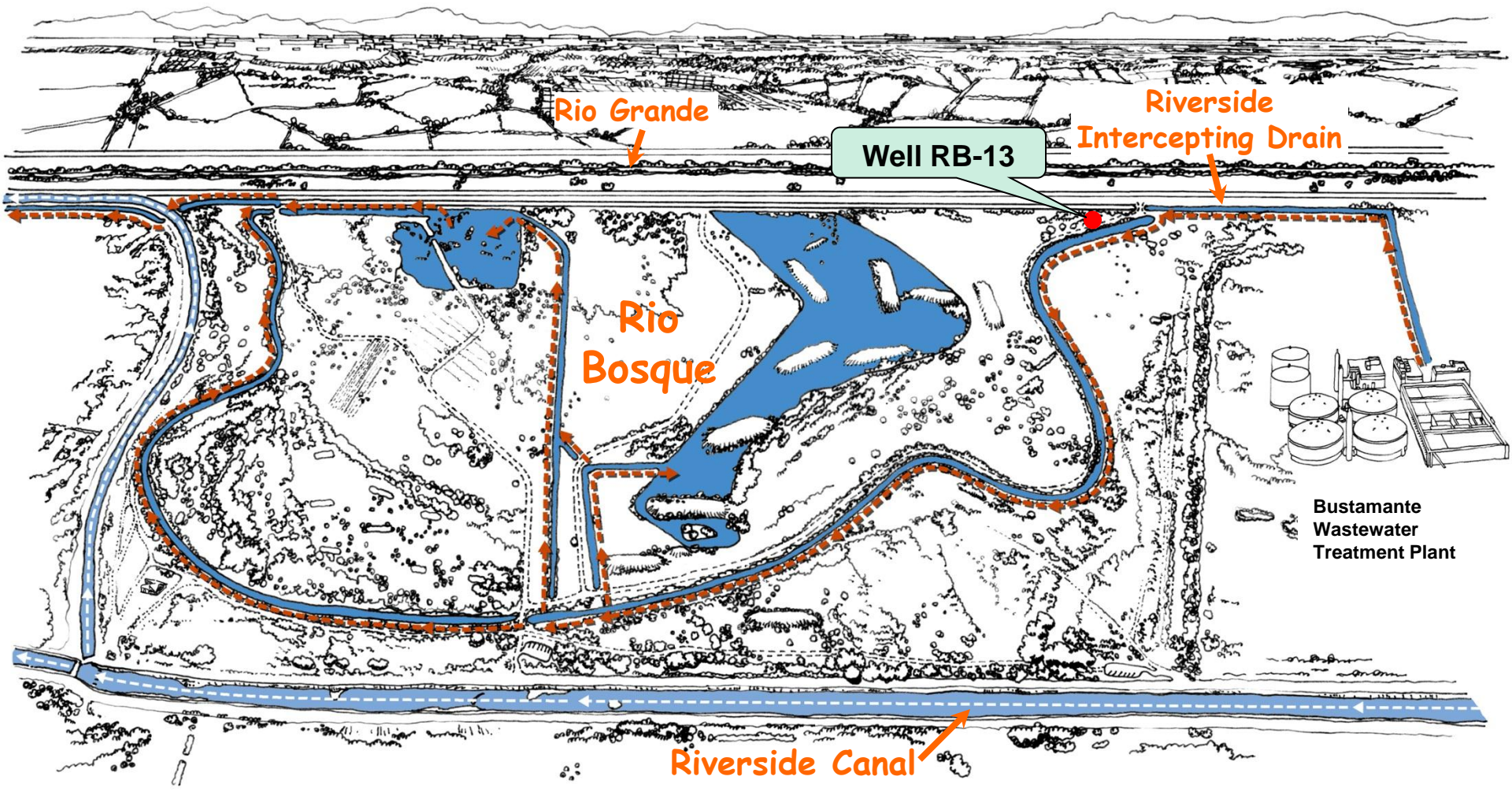






*The minimum need is for a **small base flow** through the main channel, supplemented by **occasional pulses of higher flow** for overbank flooding and flood-irrigation of the wetland cells. This will maintain the saturated soil conditions required by the wetland vegetation and will help to maintain groundwater levels required by the riparian trees.*

**A Biological Management Plan for Rio Bosque
Wetlands Park, October 2002**



Rio Grande

Well RB-13

Riverside Intercepting Drain

Rio Bosque

Bustamante Wastewater Treatment Plant

Riverside Canal



Well
RB-13

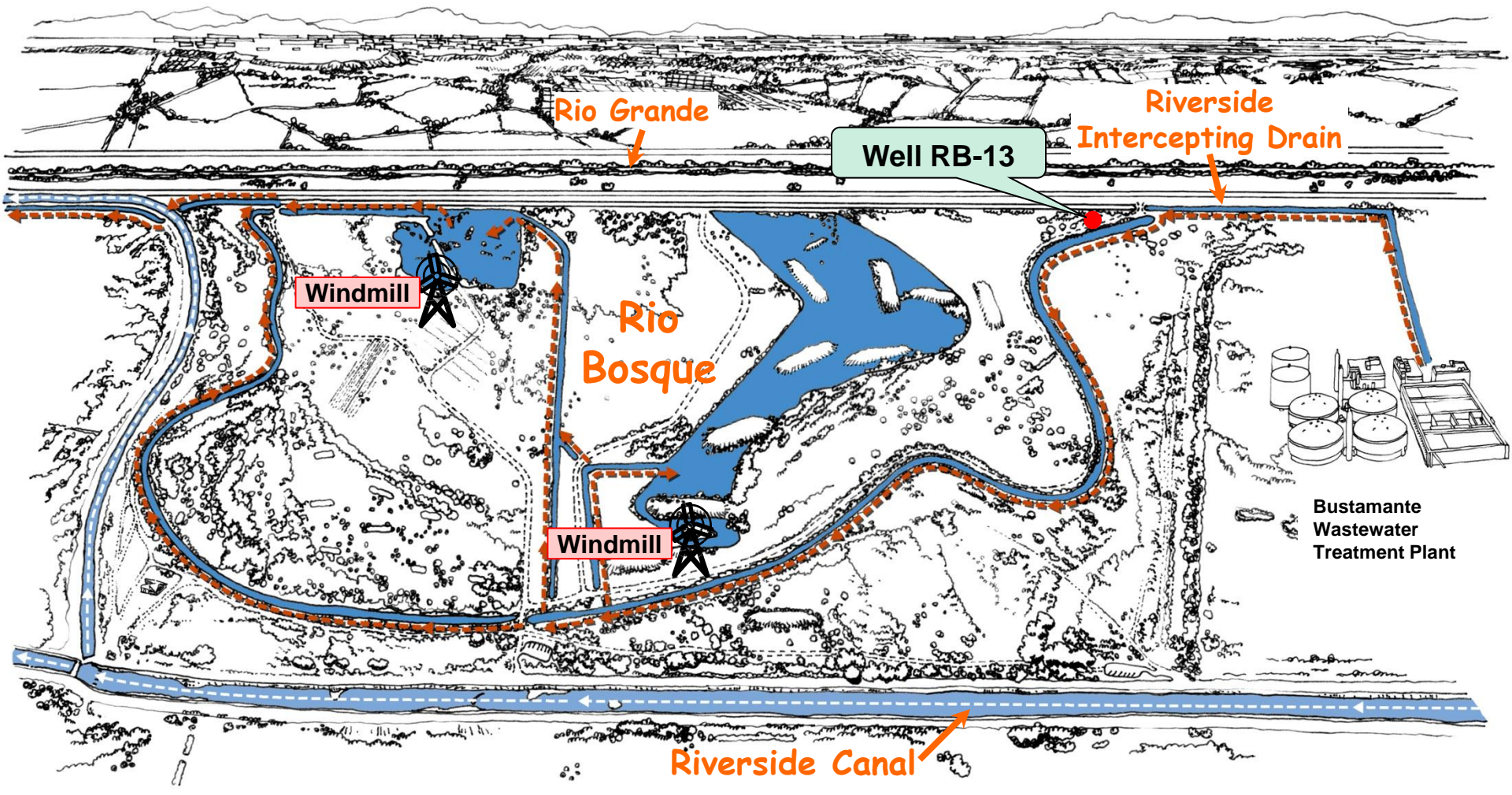




18 June 2013



14 Dec 2013



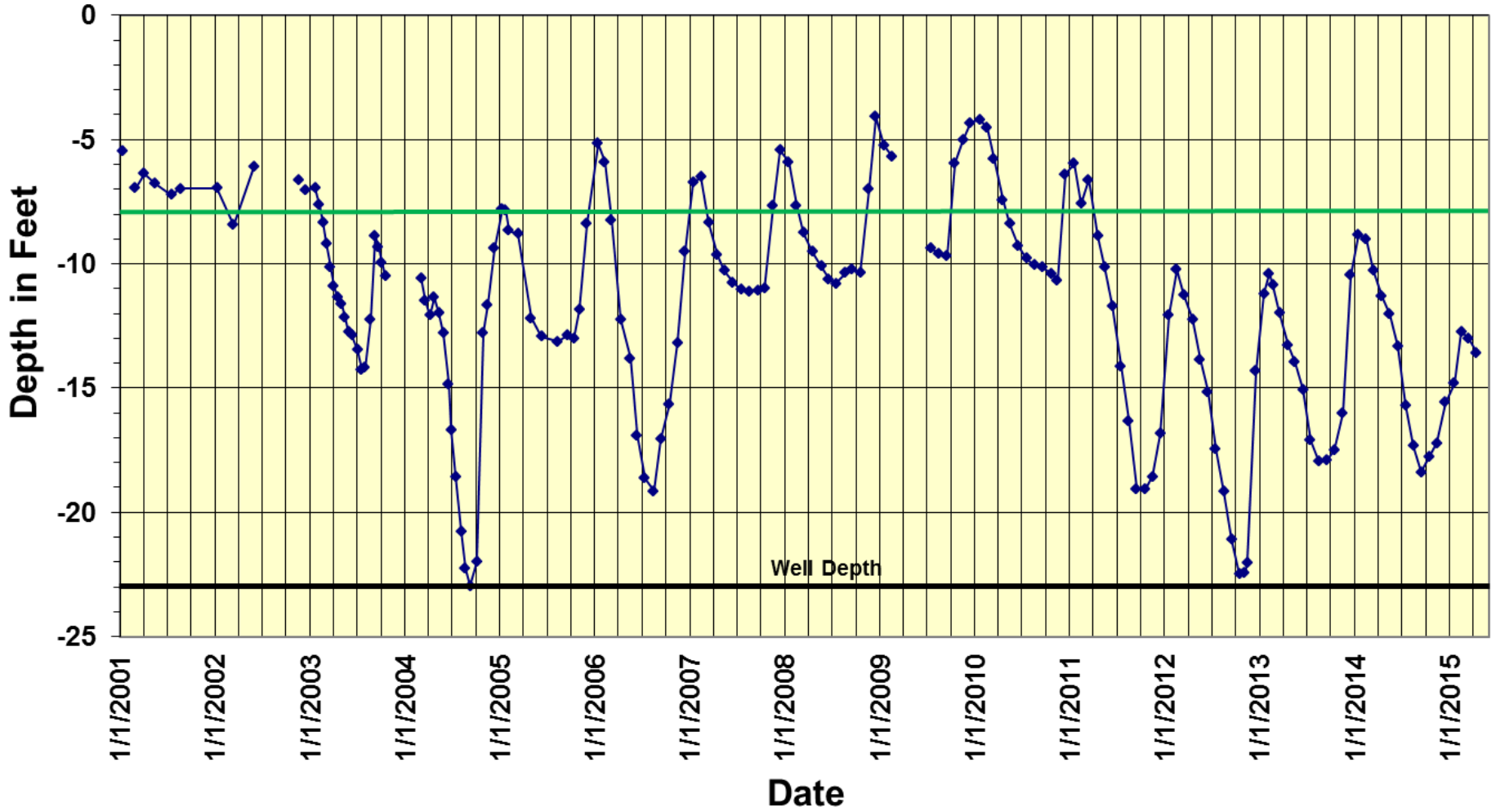




14 June 2007

Rio Bosque Wetlands Park

Depth to Groundwater (Well RB-8)

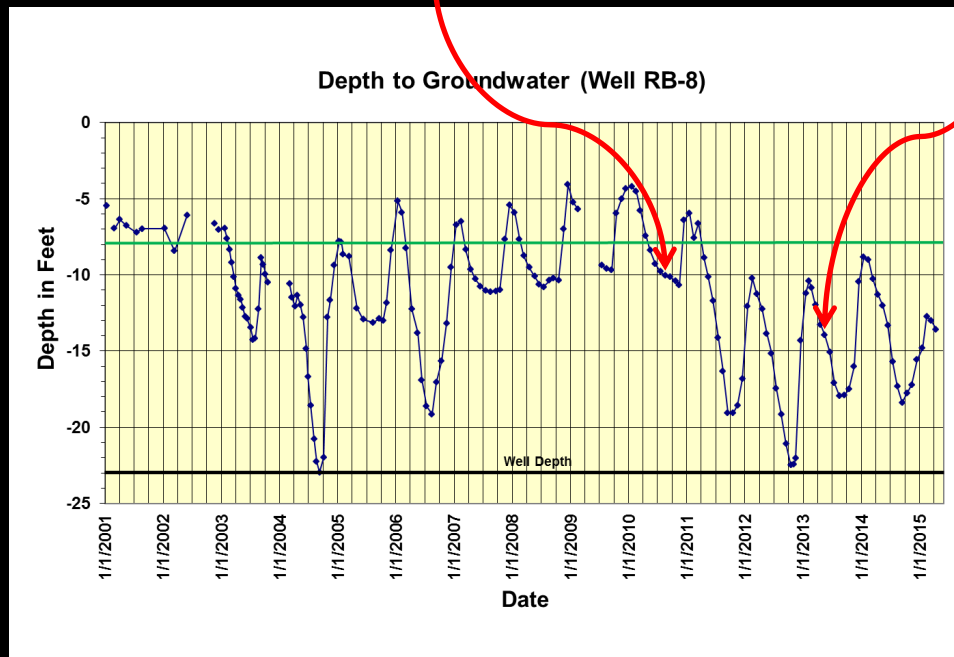




15 Aug 2010



1 May 2013





15 Aug 2010



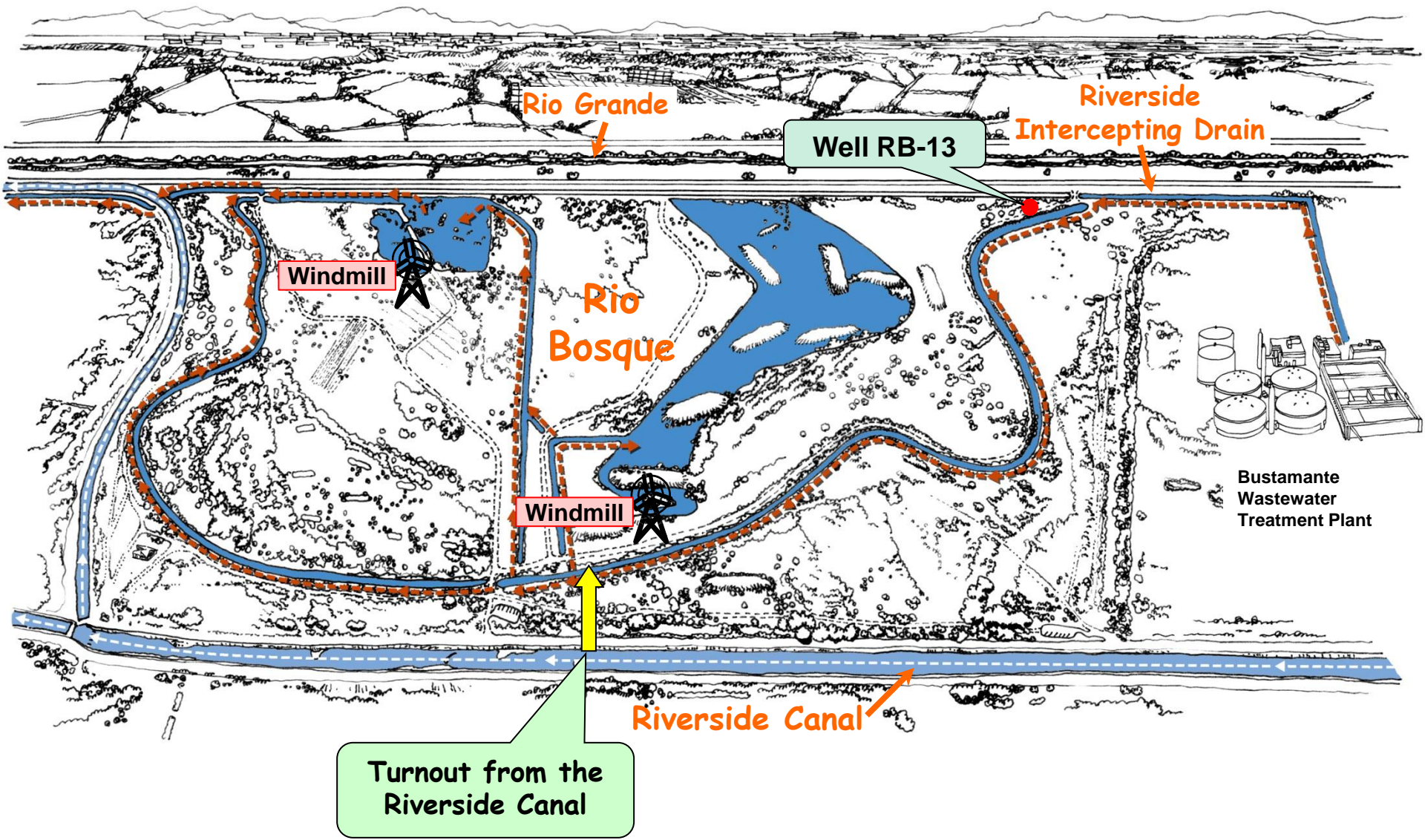
1 May 2013



30 July 2014



23 July 2014



Rio Grande

Well RB-13

Riverside Intercepting Drain

Windmill

Rio Bosque

Windmill

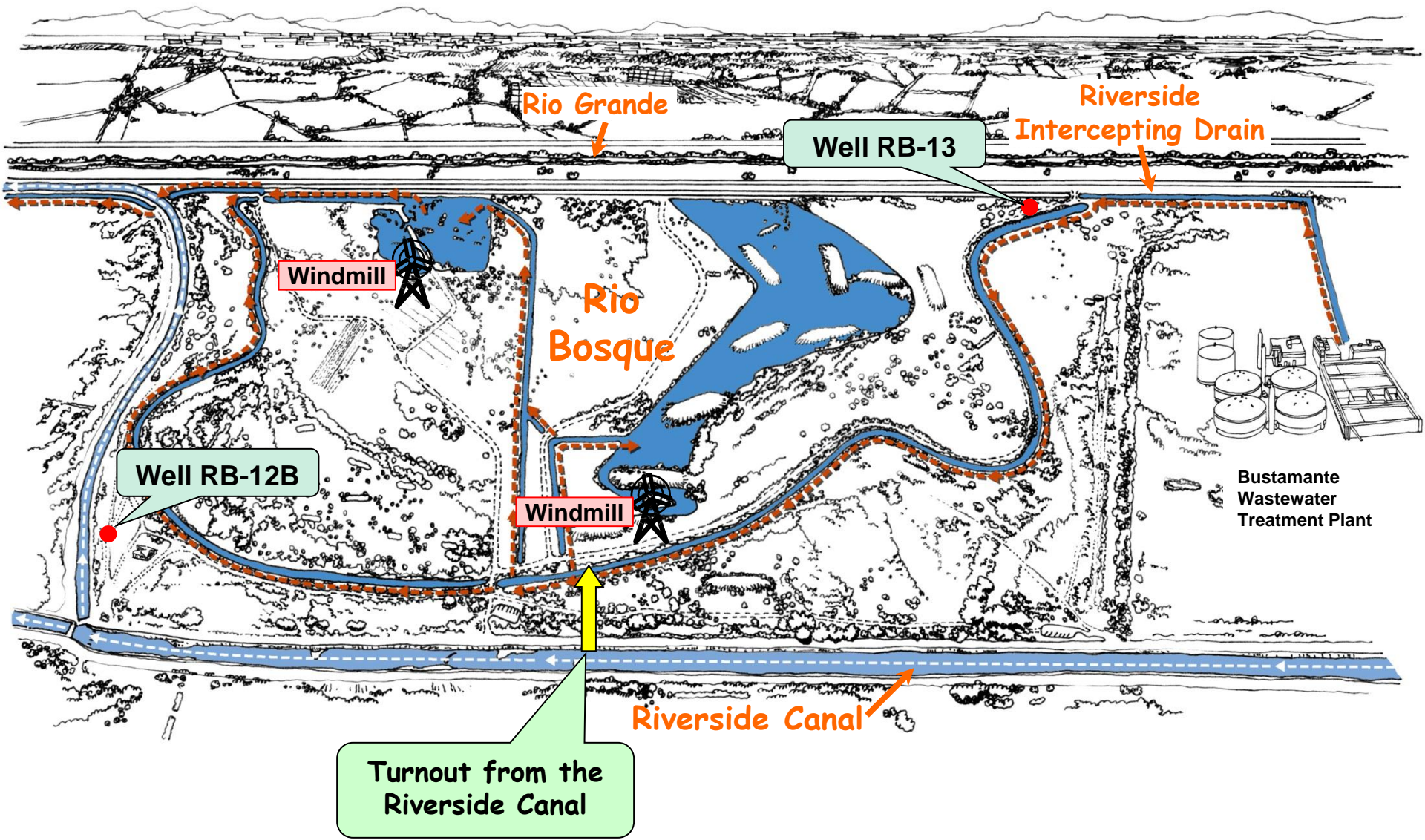
Bustamante Wastewater Treatment Plant

Riverside Canal

Turnout from the Riverside Canal







Rio Grande

Well RB-13

Riverside Intercepting Drain

Windmill

Rio Bosque

Well RB-12B

Windmill

Bustamante Wastewater Treatment Plant

Riverside Canal

Turnout from the Riverside Canal

Well
RB-13



Well
RB-12B











Well
RB-13



Well
RB-12B



JOINT RESOLUTION BETWEEN THE EL PASO CITY COUNCIL AND THE EL PASO WATER UTILITIES –PUBLIC SERVICE BOARD ON THE TRANSFER OF THE RIO BOSQUE PARK FROM THE CITY TO THE MANAGEMENT AND CONTROL OF THE PUBLIC SERVICE BOARD AND THE ASSIGNMENT OF THE LICENSE AGREEMENT BETWEEN THE CITY AND THE UNIVERSITY OF TEXAS EL PASO FROM THE CITY TO THE EL PASO WATER UTILITIES –PUBLIC SERVICE BOARD

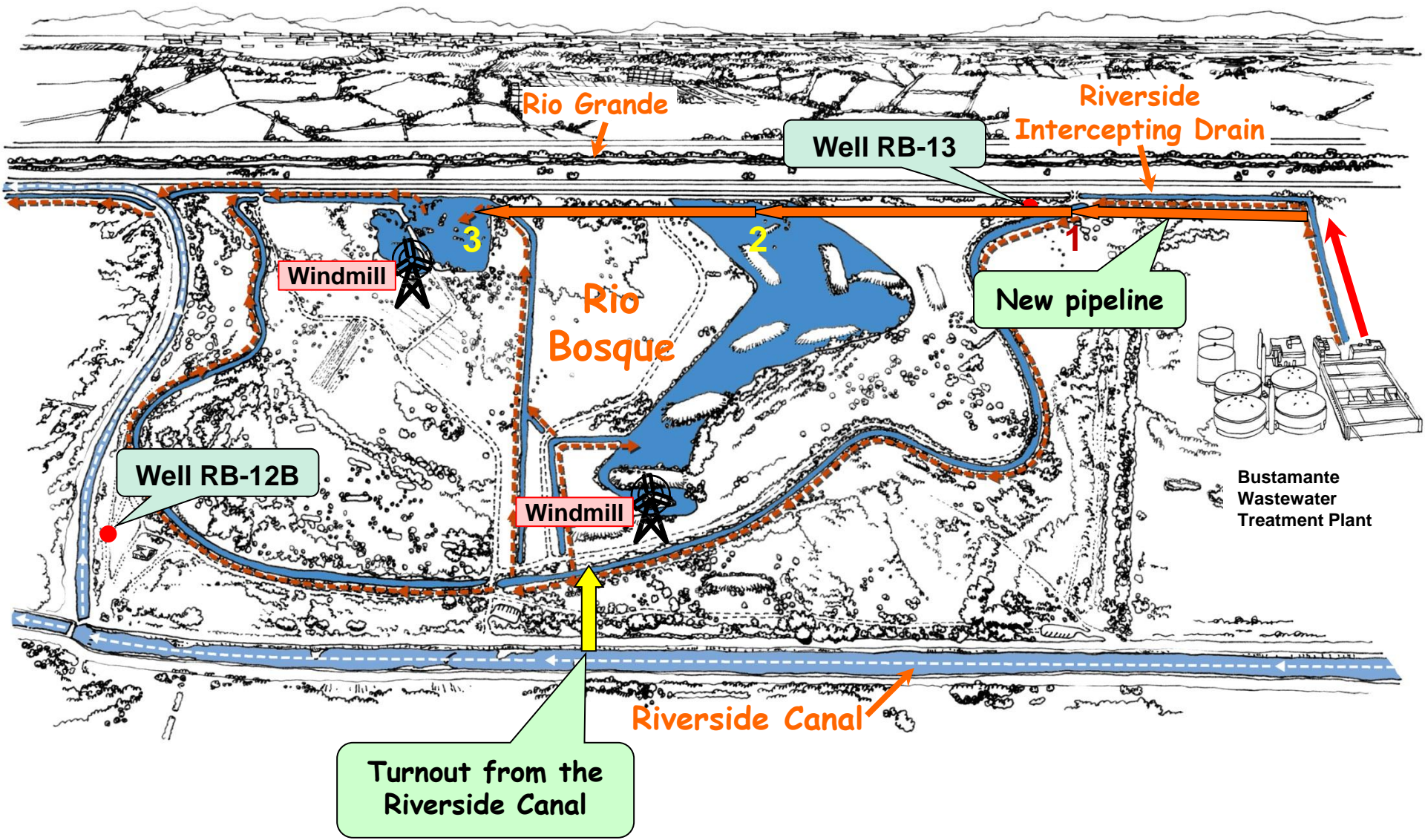
WHEREAS, the City of El Paso owns land known as the Rio Bosque Park; and,

WHEREAS, the land was acquired by the City from the Department of Interior, National Park Services’ Federal Lands-to-Parks Program for public park and recreation purposes; and,

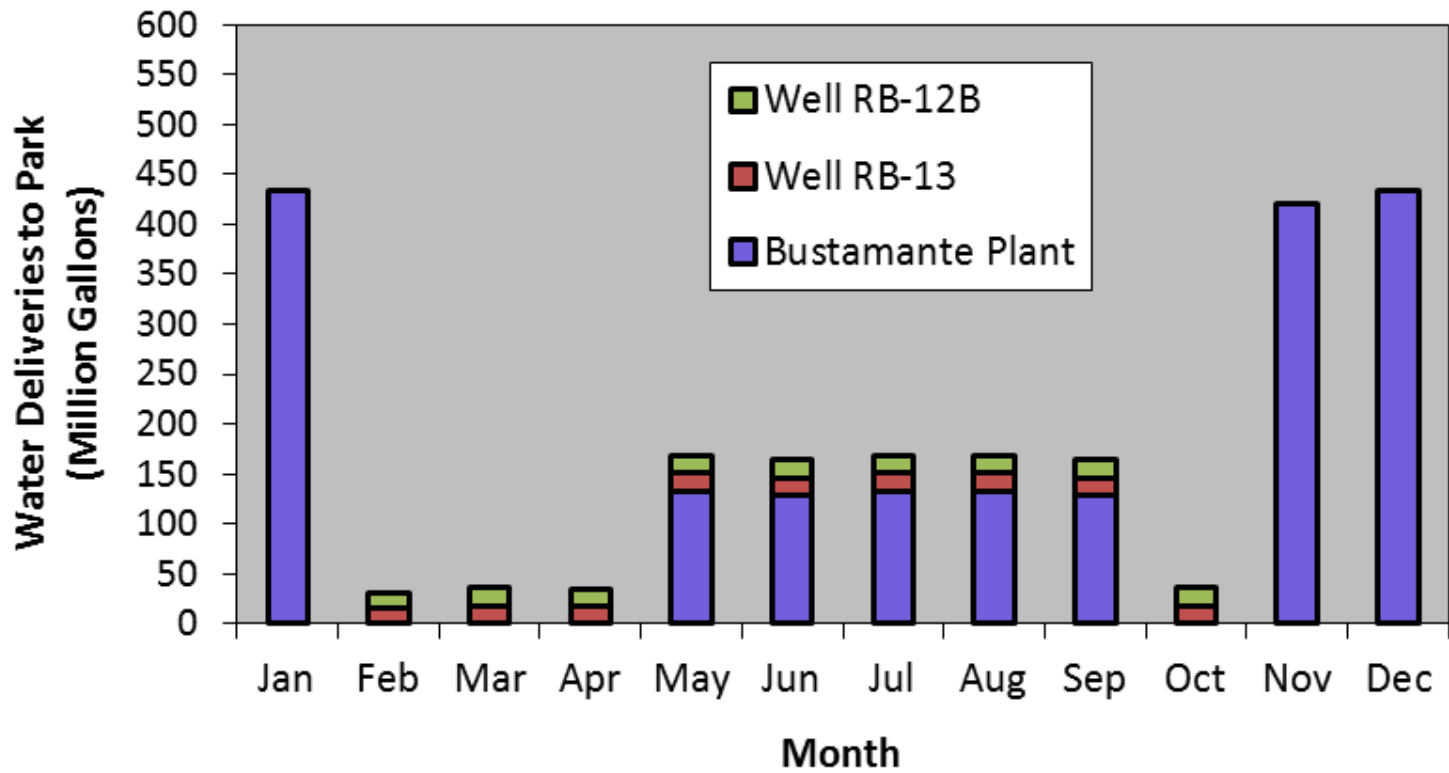
WHEREAS, on January 22, 2008 by Ordinance No. 016832 (the “License Agreement”) the City entered into a License Agreement with the University of Texas El Paso for the development and maintenance of a public park and a wetland habitat for migratory water fowl; and,

WHEREAS, the City wishes to transfer the Rio Bosque Park to the management and control of the Public Service Board so that Board can assist in providing water to the Rio Bosque; and,

WHEREAS, the City of El Paso desires to assign the license agreement between the City and the University of Texas El Paso from the City to the El Paso Water Utilities –Public Service Board











30 June 2002

3 June 2013





30 June 2002

4 July 2014



